

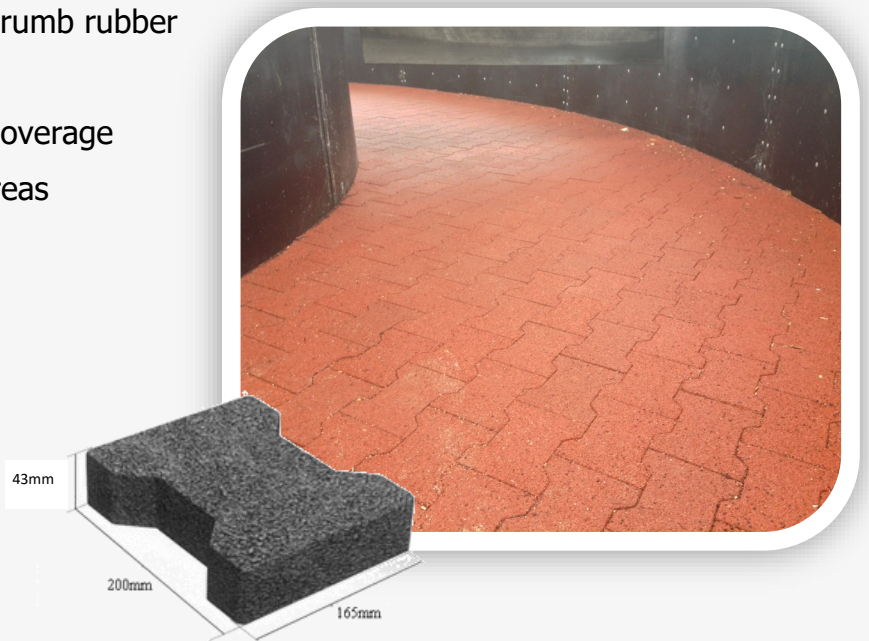
M² INTERLOCKING GRIP TOP TILES

- High quality, anti-skid & durable rubber floor tile
- Easy to lay and fit to size
- Interlocking connectable edges
- Attractive round studded surface
- Reversible for longer life expectancy
- Easy to clean surface
- High density 5MPA Rubber
- 1m x 1m with Interlocking Edge
- 18mm Thick



43MM DOG BONE PAVERS

- Made from a heavy duty durable crumb rubber
- High Density for Heavy Usage
- Easy interlocking design for area coverage
- Can be bonded for heavy traffic areas
- Slip resistant finish
- High impact and resilience
- Excellent protection from falls
- Attractive 'paved' look design
- Easily replaced
- Available in Black, Red or Green



Equestrian • Agricultural • Gym • Play

Quattro Products Limited, Milestone House Ind Est, Penrith, Cumbria, CA11 9NQ

Tel: 01768864977 Email: enq@quattro.org.uk Web: www.quattro.org.uk

